

Vector Fleet Background and Experience

Incorporated in 1988. Vector Fleet Management, LLC (VFM) has been providing dedicated, customized and cost-effective fleet maintenance and parts management services throughout the United States. Our many existing partnerships include government contracts, which include states, cities, counties, hospitals, and universities. We also have partnerships with private companies that include mining, foodservice, beverage and utility companies and OEM inspection and storage.

VFM Fleet Maintenance and Management program favorably impacts, services levels and life expectancy of equipment. This is achieved through deploying skilled personnel, a world-class fleet management information system, vocation specific fleet planning and competitive parts and tire sourcing.

VFM has significant experience with various asset management systems, including Fleetio, Trimble, AssetWorks-FA, Dossier, Maximo and Faster. Our team can assist in the overall usage and capabilities for all these systems.



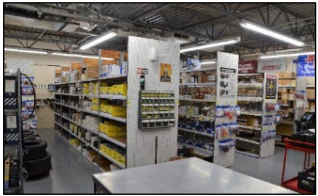
Segments Vector Fleet Management Specializes in:



- Municipalities**
Fleet Maintenance and Parts Procurement Experts for your diverse Public Fleet



- Mining**
Professional fleet maintenance for the high demands of a mining fleet



- Parts Management**
Cost Savings, efficiencies and productivity enhancements for your shop with our parts and supplies dedicated program



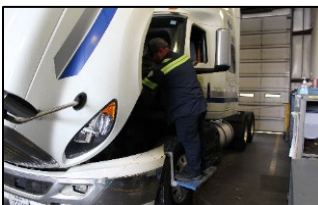
- Utility**
Fleet Maintenance and Parts Procurement Experts for Public and Private Utility



- OEM/Remarketing**
Intake, inspections, vehicle prep and readiness, your OEM partner to help manage the fleet



- Warehousing Operations**
Inventory Control, Receiving Material, Shipping and Delivery of Material as directed



- Private Fleet**
Fleet Maintenance and management for the uncompromising demands of private fleet